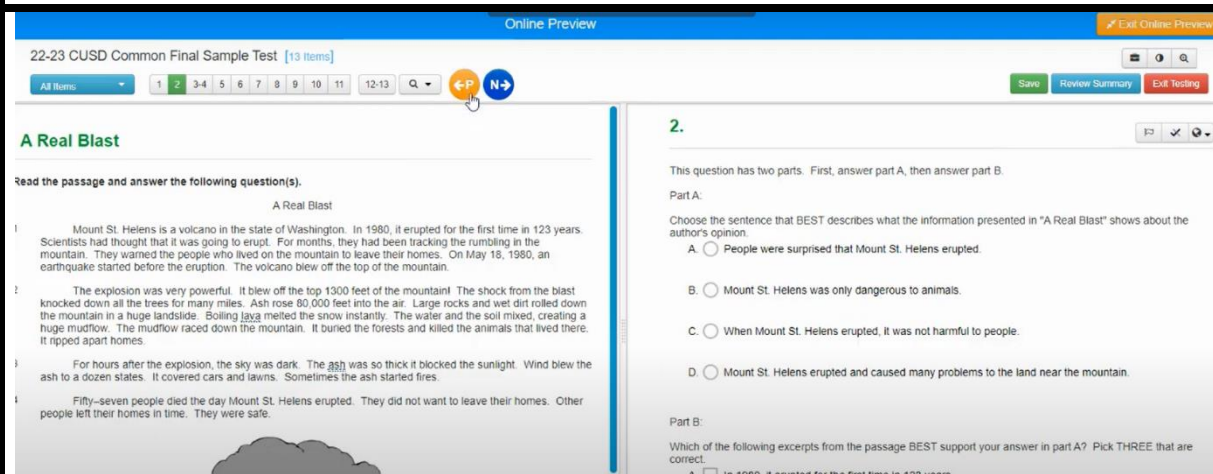


Student User Guide for School City (Common Finals)

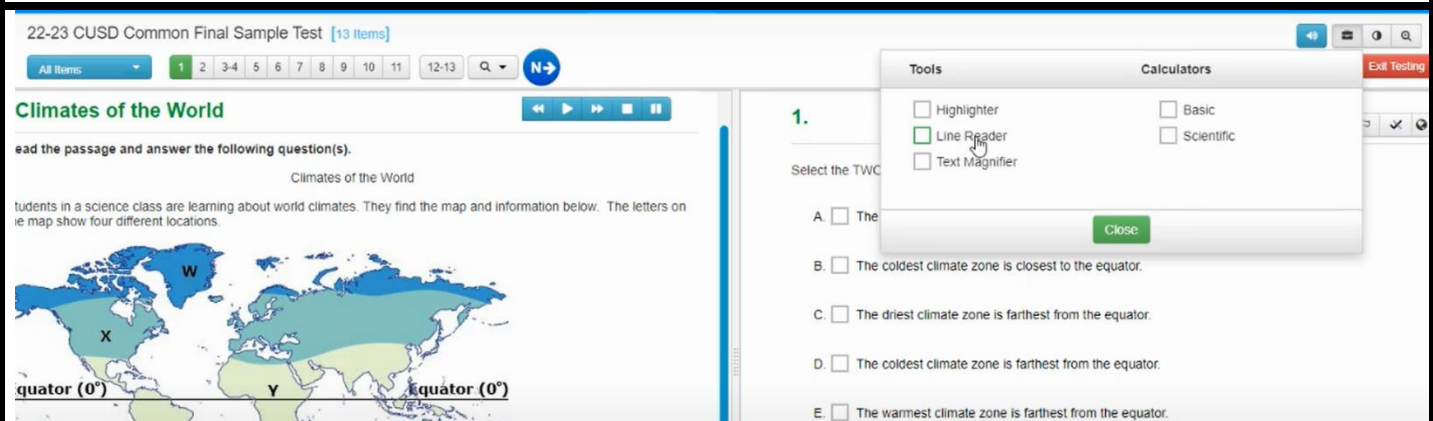
This is to assist students with using the testing features offered on School City.



At the top of the screen, students can go through the questions by either selecting the number of the question (1-13), or by using the P/N buttons to move from “Previous” to “Next”.

Students can “flag” a question if they’d like to go back to it for further review before submitting.

To submit the test, students will choose “Review Summary” to see that they have answered all questions, and then click “Submit”



More BUTTONS at the top of the screen...

Audio settings (blue/white speaker): Students can adjust speech speed and modify other audio options.

Tools (opened above): Students can highlight text, use a line reader, magnify the text, and access calculators.

Color contrast: Students can adjust text/screen color

Zoom: Students can zoom in/out the entire screen.

22-23 CUSD Common Final Sample Test [13 Items]

All Items 1 2 3-4 5 6 7 8 9 10 11 12-13 Q N

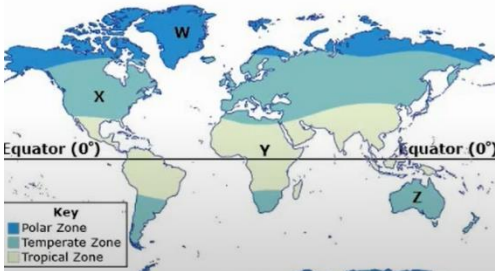
Save Review Summary Exit Testing

Climates of the World

Read the passage and answer the following question(s).

Climates of the World

Students in a science class are learning about world climates. They find the map and information below. The letters on the map show four different locations.



Equator (0°)

Equator (0°)

Key

- Polar Zone
- Temperate Zone
- Tropical Zone

1.

Select the TWO sentences that correctly describe the climate zones.

- ☐ A. The driest climate zone is closest to the equator.
- ☐ B. The coldest climate zone is closest to the equator.
- ☐ C. The driest climate zone is farthest from the equator.
- ☐ D. The coldest climate zone is farthest from the equator.
- ☐ E. The warmest climate zone is farthest from the equator.

There's a rewind, play, forward, stop, and pause button above both side of the testing screen. The one above the passage is to access the text to speech for the passage, and the one above the questions is to access the text to speech for the questions.

In addition, the orange check that is shown in the top right of the image shows the "answer eliminator" tool that is available to students. This tool's main purpose is for students to "cross out" the answer choices they believe to be wrong, so that they no longer focus on choosing those for the answer.

The globe next to the orange check is a resources button. Not all exams have additional resources, but if, for example, a math test has a formula page, that's where that can be found.

22-23 CUSD Common Final Sample Test [13 Items]

All Items 1 2 3-4 5 6 7 8 9 10 11 12-13 Q N

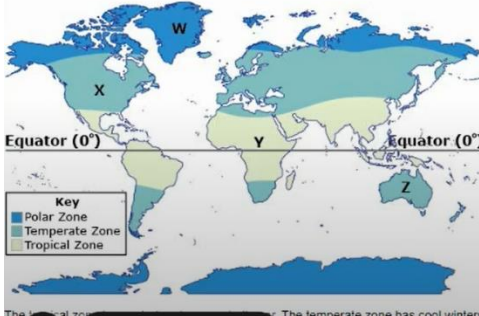
Save Review Summary Exit Testing

Climates of the World

Read the passage and answer the following question(s).

Climates of the World

Students in a science class are learning about world climates. They find the map and information below. The letters on the map show four different locations.



Equator (0°)

Equator (0°)

Key

- Polar Zone
- Temperate Zone
- Tropical Zone

1.

Select the TWO sentences that correctly describe the climate zones.

- ☐ A. The driest climate zone is closest to the equator.
- ☐ B. The coldest climate zone is closest to the equator.
- ☒ C. The driest climate zone is farthest from the equator.
- ☐ D. The coldest climate zone is farthest from the equator.
- ☐ E. The warmest climate zone is farthest from the equator.

You'll notice the passage side has a blue scroll bar. Make sure you scroll all the way to the bottom so that you can see the entire passage.

The question asks students to choose TWO answers. The directions indicate this, and the boxes show that students can select multiple answers (circle answer choice marks indicate a single answer/square is multiple answers)

22-23 CUSD Common Final Sample Test [13 Items]

All Items 1 2 3 4 5 6 7 8 9 10 11 12-13 Save Review Summary Exit Testing

A Change for America / A Big, Fast Mistake

Read the passage and answer the following question(s).

A Change for America

1 One hundred years ago, cars were a new idea. In the beginning of the 1900s, most people still depended on horses. Cars cost a great deal of money, and only the very rich could buy them. By the 1920s and 1930s, things had changed. Cars became cheaper to make, so more families were able to own cars.

2 Cars did not just change how fast people could travel. They changed how people thought about their free time. People began traveling for fun. They used their cars to take family vacations. Cars gave people a new sense of freedom. Cars also changed how people lived. Car owners did not need to live right next to where they worked. They did not need to live right next to stores. Many people moved from cities to suburbs, where everything was more spread out.

3 As people traveled more, America changed to meet the needs of drivers. New businesses started that helped people travel by car. Restaurants, motels, and gas stations sprang up across the country. The car helped to make American life as we know it today.

1769	1842	1897	1914	1916	1920	1925	1928	1929
Nicolas-Joseph Cugnot invents the car by using	Inventors use electric batteries to power cars.	New York City taxis use electricity to power	The price for a popular car is \$490.	The Federal-Aid Road Act is the government's first step	Over 8 million people own cars.	The first motel, a hotel meant for car travelers,	Work begins on America's first parkway, in	23 million people own cars.

3.

The following question has two parts. First, answer Part A. Then, answer Part B.

Part A:

What is an important idea in "A Big, Fast Mistake"?

A. ☐ cars run on steam and electricity

B. ☐ cars brought new problems

C. ☐ cars changed how people travel

D. ☐ cars became cheaper

Part B:

Which sentence from "A Big, Fast Mistake" BEST supports your answer in Part A?

A. ☐ Imagine the quiet sound of horse hooves clopping along.

You'll notice the passage side has two titles "A Change for America" and "A Big, Fast Mistake". This indicates there are two texts to review for these questions. Use the scroll bar to see both. In addition, the question side has several questions needing to be answered: 3 part A, 3 part B, and 4. PLEASE MAKE SURE YOU ALWAYS SCROLL TO THE BOTTOM SO YOU DON'T MISS ANYTHING!

4.

Select the TWO sentences below from "A Big, Fast Mistake" that tell about problems when cars were first made.

Imagine America before the car. Imagine the quiet sound of horse hooves clopping along. Think of the clean country air. Now picture the frightened horses as a car horn blasts. Think about the smell the car leaves behind. When cars became a part of American life, they brought many problems.

If a question asks to "select" something, click on the answer you'd like to choose. In this example, the question asks for you to select TWO sentences. Simply click on the sentences you'd like to provide as your answer. Click the sentence again to deselect if you need to change your response.

22-23 CUSD Common Final Sample Test [13 Items]

All Items 1 2 3 4 5 6 7 8 9 10 11 12-13 Save Review Summary Exit Testing

A New Kind of Garden

14 After hearing that, Johnny got an idea. He walked up to the king and said, "Sir, I'd like to show you a special place." The king was surprised but willing to try anything.

15 They walked to the edge of the forest, where the sunlight was spotty through the trees. They moved further into the forest, now shaded from the sun. Johnny showed the king his rest spot. The king looked around, shocked, but delighted. There were flowers and plants with leaves large and small.

16 "This is amazing! I think you solved our problem!" shouted the king.

17 A few hours later, the whole town was busy digging and planting seeds in the royal garden.

18 After several weeks, the king invited Johnny to the castle. Johnny's jaw dropped when he arrived. The land was covered with beautiful plants and trees. It looked just like his favorite place.

19 The king winked at Johnny. They both walked into the garden for a mid-afternoon rest.

5.

Choose the word or phrase from each dropdown menu to correctly complete the sentence.

Johnny gets the idea to bring the king to the forest when the king says he has a town without (Select).

(Select)

plants

sunlight

help

happiness

If a question asks to use the drop downs to select an answer – click the drop down to see your options and click on the one you'd like to choose. MAKE SURE YOU ANSWER ALL PARTS OF EVERY QUESTION!!!

22-23 CUSD Common Final Sample Test [13 Items]

All Items

1

2

3-4

5

6

7

8

9

10

11

12-13

Q



6.

Click ALL of the shapes that appear to be quadrilaterals.



If a question asks for you to click on an item, use your cursor to click on the item(s) you would like to select as your answer. In this example, the question asks for ALL of the quadrilaterals, so multiple answers can be selected. If you click something by mistake, click it again to “deselect”.

22-23 CUSD Common Final Sample Test [13 Items]

All Items

1

2

3-4

5

6

7

8

9

10

11

12-13

Q



7.

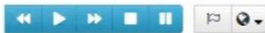
Determine whether each fraction model is equivalent to the fraction $\frac{2}{3}$. Select Yes or No for each model.

Statement	Yes	No
	<input type="checkbox"/>	<input checked="" type="checkbox"/>
	<input checked="" type="checkbox"/>	<input type="checkbox"/>
	<input type="checkbox"/>	<input type="checkbox"/>

The question asks for students to either select “yes or no” for each model. Click on the box you’d like to select. To deselect, click the box again.

MAKE SURE YOU ANSWER ALL PARTS OF EVERY QUESTION!!

8.



Identify the independent and dependent variables in the first investigation by dragging and dropping the correct labels into the table.

Independent Variable	Dependent Variable
mass of balloon rocket	direction of force on balloon rocket
mass of balloon rocket	direction of force on balloon rocket
amount of force on balloon rocket	movement experienced by the balloon rocket

This question asks students to click and drag the answers into the table. Use your cursor to click on the responses and drag them to the box you'd like them to be placed in. You'll notice the answer choices still remain at the bottom – they do NOT disappear once you use them. Be careful to check for correctness before moving on.

9.

Order the numbers below from LEAST to GREATEST. (Least should be at the top of the box.)

Drag unused items from here...

3,484

3,429

3,480

Drop and order your selected items here...

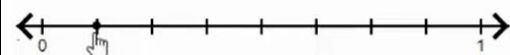
3,426

3,482

This question asks students to click and drag the answers from the top table into the bottom table from LEAST to GREATEST. *please pay attention to what the question is asking you to do! On this click/drag, the options DO disappear from the answer bank, unlike the example on question 8 above. Double check for correctness before moving on.

10.

Place a point on the number line where $\frac{1}{8}$ should be located.



To place a point on the number line, put your cursor over the place you'd like to choose, and then click. A point will appear. If you don't like the point in that location, click again to deselect. BE CAREFUL : This will let you click multiple points on the number line, but the question only asks for ONE point to be placed.

Kinetic Energy



Read the passage and answer the following question(s).

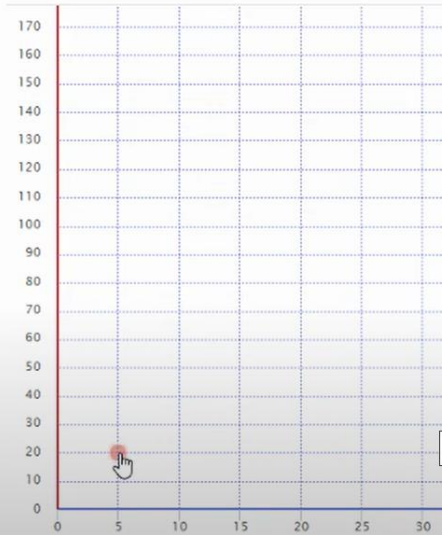
Kinetic Energy

Nikki and Devra design an investigation to describe the relationship between kinetic energy of a moving object and the mass of the object. They decide to use different sized balls rolling down a ramp. To measure the amount of kinetic energy in each ball, they place a plastic cup at the bottom of the ramp. When the ball rolls down the ramp, it hits the plastic cup at the base of the ramp and the cup moves. The distance the cup moves after the collision is related to the kinetic energy of the ball rolling down the ramp. Their data are shown in the table below.

Type of Ball	Mass (g)	Distance Cup Moved (cm)
Marble	5	20
Steel Ball Bearing	10	40
Rubber Ball	20	90
Golf Ball	45	180



11.



To place a point on the coordinate plane, put your cursor over the place you'd like to choose, and then click. A point will appear. If you don't like the point in that location, click again to deselect. **BE CAREFUL :** This question asks you to plot 4 points on the grid. If for some reason you submit your answer with more than the 4 from the table, your entire answer will be marked incorrect.

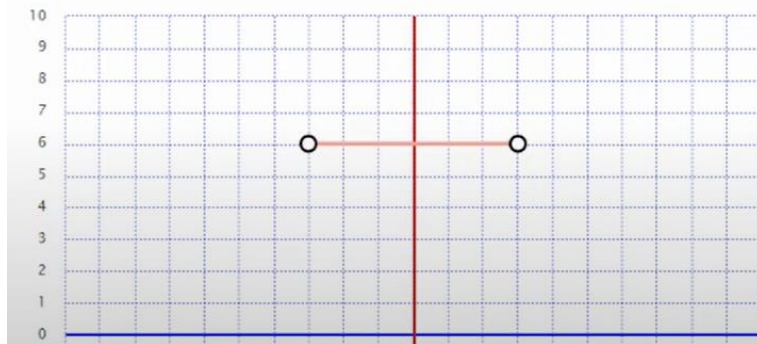
12.

A linear function is defined as $y = \frac{1}{3}x + 1$.

Graph the line of a DIFFERENT linear function which has the same rate of change but crosses the y -axis at a point that is exactly one unit higher.

You must graph the line using only two points; any other graphed points will cause the line to be scored as incorrect.

Graphing



To place a point on the coordinate plane, put your cursor over the place you'd like to choose, and then click. A point will appear. A line will appear once you've made two points on the graph. If you don't like the point in that location, click again to deselect. There are TWO options at the bottom of this grid "draw lines" and "delete lines". Use the "draw lines" to draw lines, and "delete lines" to remove any lines from your grid.

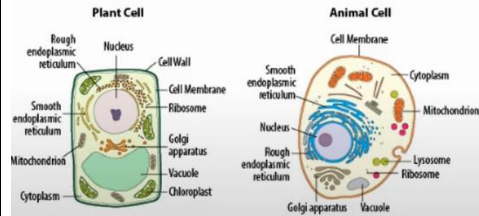
BE CAREFUL : This question asks you to plot 2 points on the grid. If for some reason you submit your answer with more than the 2 to make your line, your entire answer will be marked incorrect.

Eukaryotic Cell Structures

Read the passage and answer the following question(s).

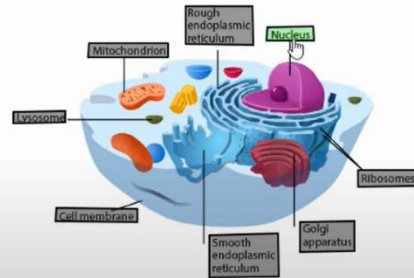
Eukaryotic Cell Structures

Plant and animal cells contain several organelles that each have their own structure and function. However, all of the organelles must work together to keep the cell functioning and maintaining homeostasis. The image shows a plant cell and an animal cell.



13.

A cell has a deficiency that prevents it from regulating the movement of water, food, and wastes into and out of the cell. Click on the cell structure that is MOST LIKELY affected.



If a question asks for you to click on an item, use your cursor to find the item you'd like to select and then click. In this case, the image is NOT clickable, but the labels are. You'll notice "Nucleus" is selected as the answer since it is a different color than the rest. BE CAREFUL: this question will let you select multiple labels, but the question asks you to click "the cell", indicating only one answer should be given.

Once you answer the final question on the test, it will give you a "done" button to push that will take you directly to the "Review Summary" page. You can also just click on the "Review Summary" button to get there. On the Review Summary page, you can check to see if you've answered all questions and check to see if you had any questions flagged to look at again. Once you're confident in your responses, you can click the green "submit" button to submit the exam. Once you submit, you will not be able to re-enter the test.

*Helpful to know: The text to speech tool is NOT available on ELA questions.